

University of Diyala

Telecom Switching Systems

Lecture 11

4th Stage

Communication department / Engineering collage

Lecturer Marwa Mohammed



Signal Exchange Diagram

There are two types of diagrams used to represent the sequence of events between the subscriber and exchanges. They are:

1. Signal exchange diagram
2. State transition diagram

Both diagrams can be used to specify the behaviour of different control units in switching centre. For the local call, the steps involved in processing a call is shown in Fig 1.



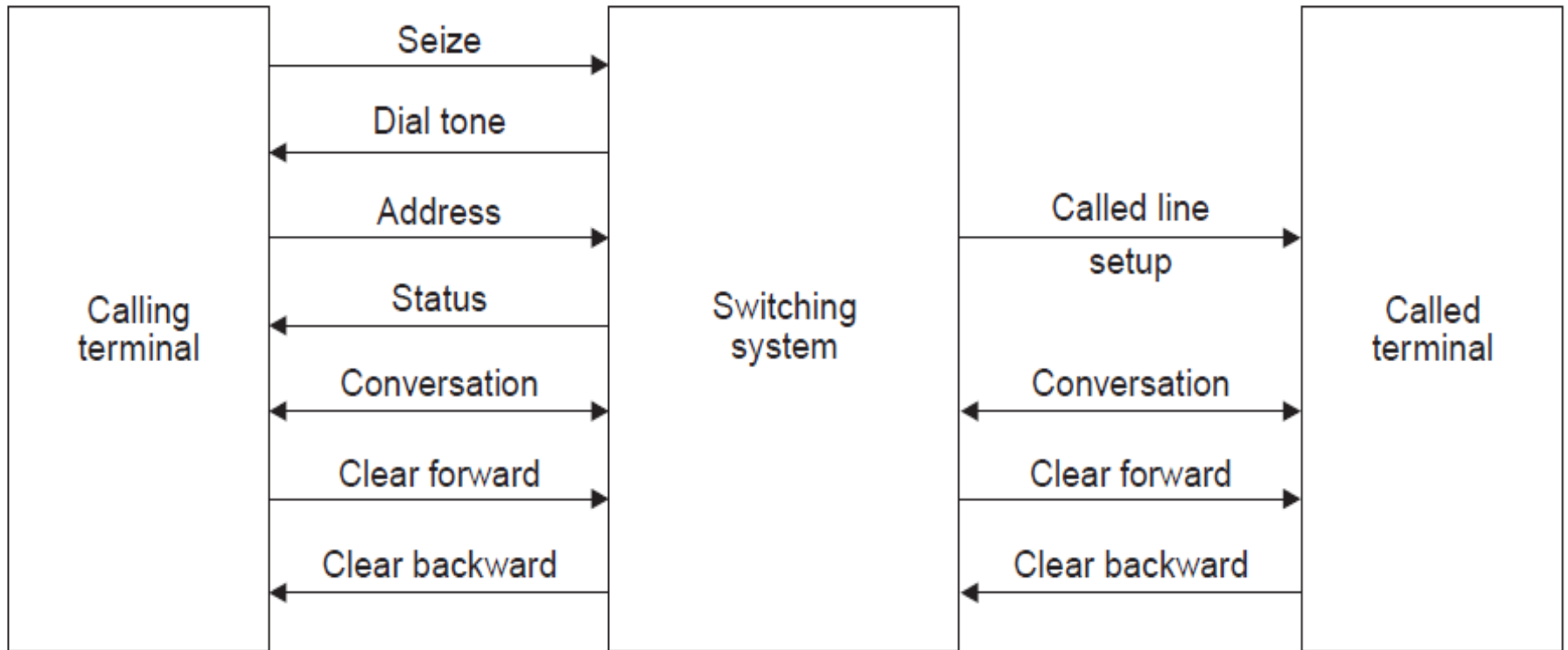


Fig.1 Signal exchange diagram.



State Transition Diagram

The state transition diagram (s.t.d.) specifies the response of a control unit to any sequence of events. s.t.d. is a powerful design tool. It helps the designer to consider all possibilities of occurrence of events.

Fig.2 shows the basic symbols used in a state transition diagram.



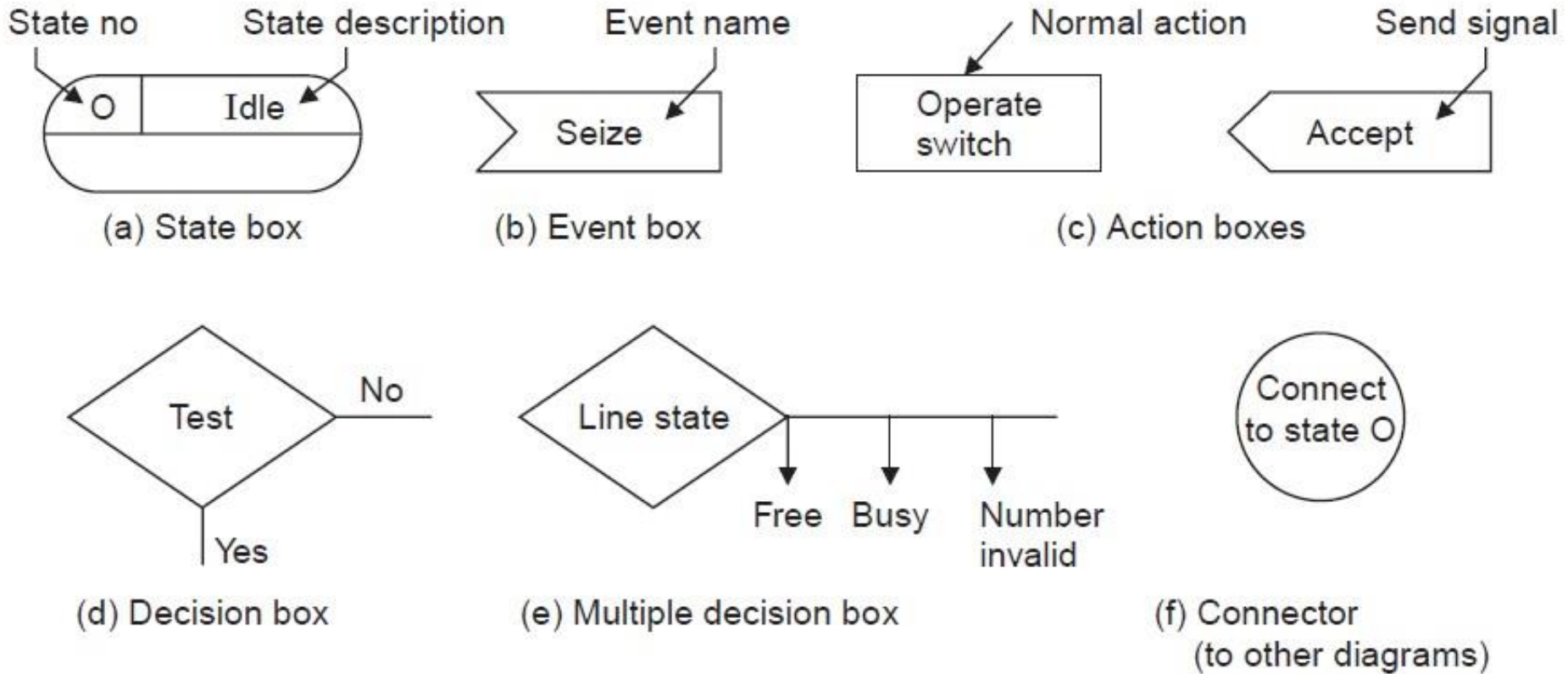


Fig.2. Basic symbols of s.t.d.

